

Info sheet

BA system separator: Safety for drinking water

Clean drinking water is important to us!

Due to the pressure conditions in the system, pollutants or dirt from connected devices and installations can flow back into the drinking water pipe at taps.

This can be easily and conveniently prevented with the system separator (pictured right) from Schlösser Armaturen: Thanks to the middle chamber inside (based on a three-chamber system with inlet, middle and outlet chamber as well as backflow preventer), the system separator reliably protects the drinking water from contamination, e.g. from a service water circuit.

Simple installation

The system separator can be installed in just a few steps; individual components and assemblies are pre-assembled. In the version with an integrated tap valve, the component is connected like an outlet fitting.

In the version for connection to a tap valve, installation begins with connecting the housing to the existing fitting.

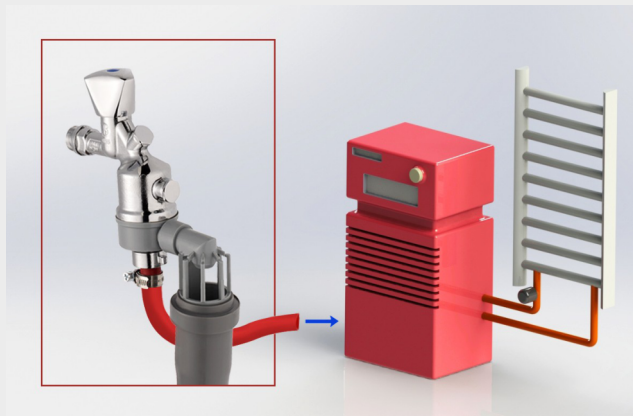
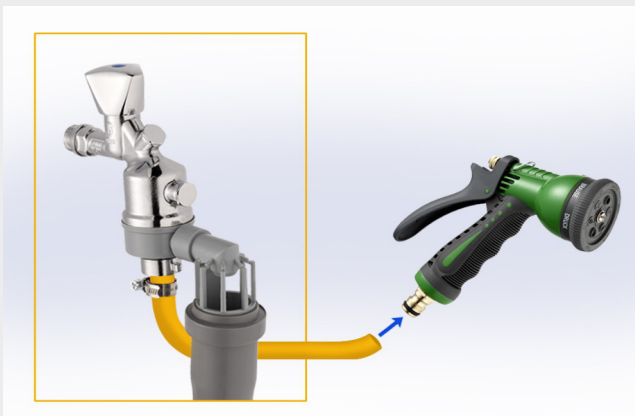
The system separator protects the drinking water against liquids up to and including DIN category 4 (health hazard due to toxic, very toxic, carcinogenic or radioactive substances) and thus offers the highest protection level according to the European standard for the protection of drinking water DIN EN 1717 and the national standard DIN 1988-100.



*System separator
with integrated tap valve*

Art-Nr.: 0082601550001

**Recommend the installation of a system separator from Schlösser Armaturen to your customers -
for optimum drinking water hygiene.**



Areas of application of the system separator

- Garden irrigation systems (picture left),
- Heating filling in the domestic installation (picture on the right)
- Flushing systems,
- Boot washing systems in production plants,
- Laboratory equipment,
- Connections for high-pressure cleaners, etc.

Annual maintenance mandatory

According to the European directive (DIN EN 1717), system separators must be serviced annually. This can be done easily and conveniently with the system separator from Schlösser Armaturen by replacing the system cartridge and subsequent inspection. Conclude a maintenance contract with your customers!

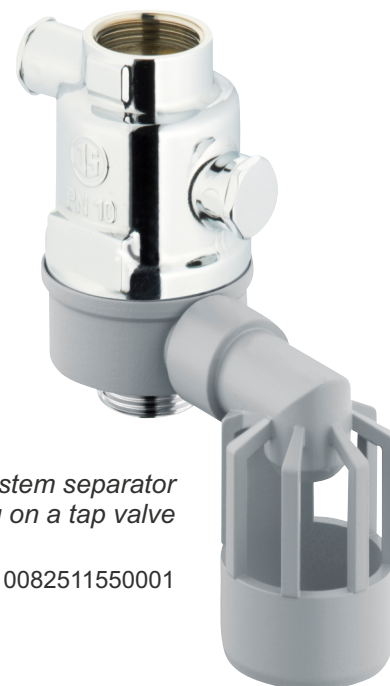
DVGW certificate proves highest product safety

In manufacturing, we pay attention not only to design and convenience, but also and especially to the hygienic requirements for the components. We use only high-quality, tested and legally approved materials according to the current status of the UBA list (German Federal Environment Agency).

We guarantee the product safety of the system separator with a certificate from the DVGW (Deutscher Verein des Gas- und Wasserfachs e. V.). It is available on the DVGW website under the registration numbers NW-6373CP0289 and NW-6305CP0335.

Anyone who correctly installs DVGW-certified products fulfils their obligation under the Drinking Water Ordinance to a large extent. The risk of having to replace products later on or of having to accept liability in the event of faults is thus reduced to a minimum. Whether you are a utility company, dealer, specialist tradesman or consumer: DVGW-certified products offer you maximum safety.

The system separator from Schlösser Armaturen is completely DVGW-certified!



*System separator
for mounting on a tap valve*

Art-Nr.: 0082511550001

With the installation of Schlösser products, you and your customers are on the safe side!